



**KITTYWheelz™**

**USER MANUAL**

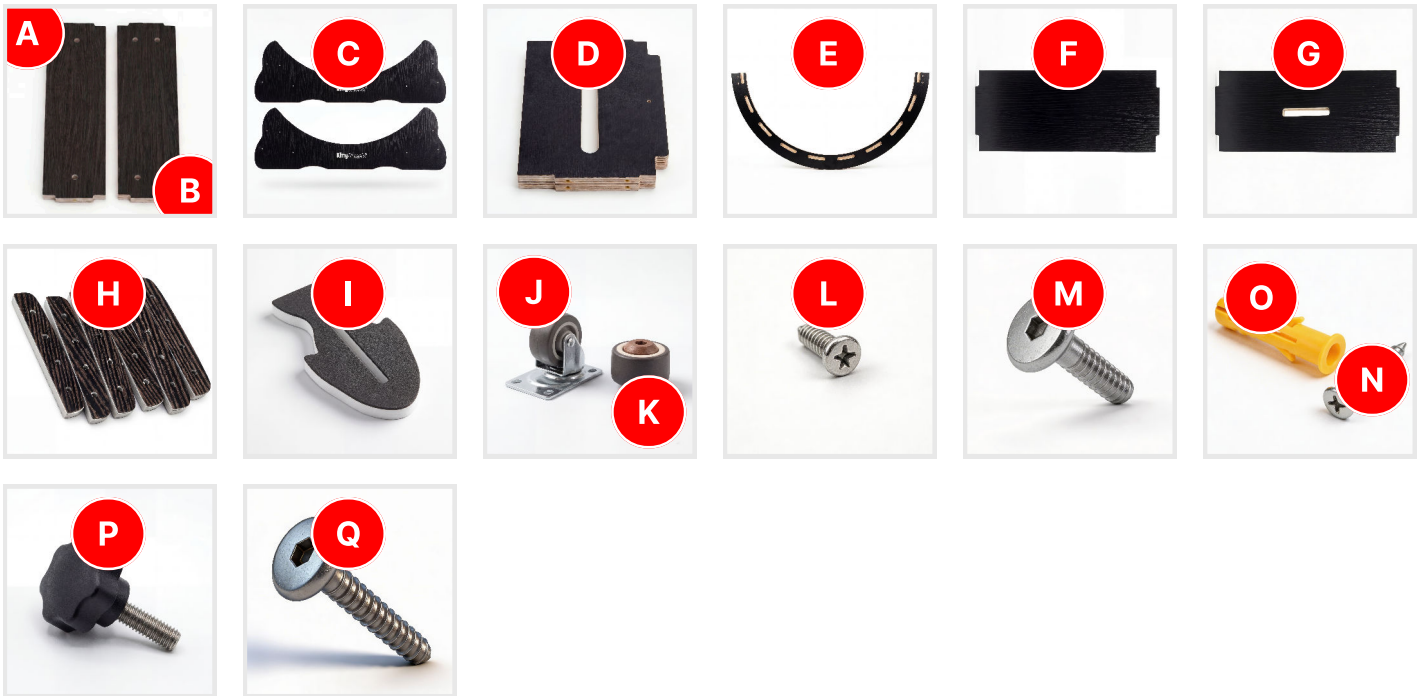


SCAN ME

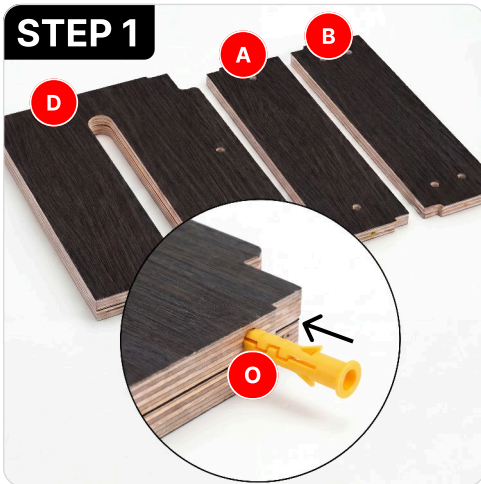
**WATCH VIDEO HERE**

<https://marlenespetshop.com/pages/kitty-wheelz-instructions>

**INCLUSIONS PARTS:**



**INSTRUCTION:**



Insert the yellow stopper into the part sequentially A.B.D.F.G. in the holes at both ends



Assemble the pulleys on Part A. Do this both side ends



Assemble the pulleys on Part B. Do this both side ends



**KITTYWheelz™**

**USER MANUAL**



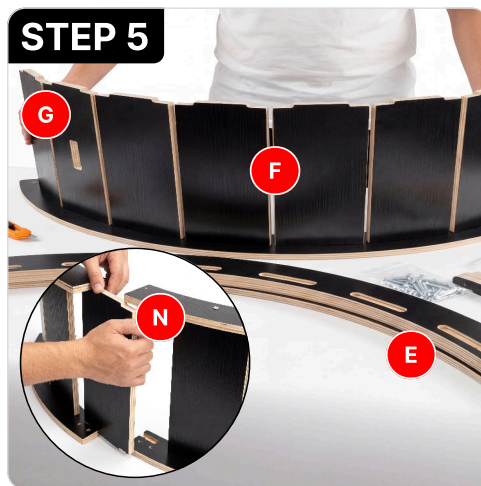
**SCAN ME**

**WATCH VIDEO HERE**

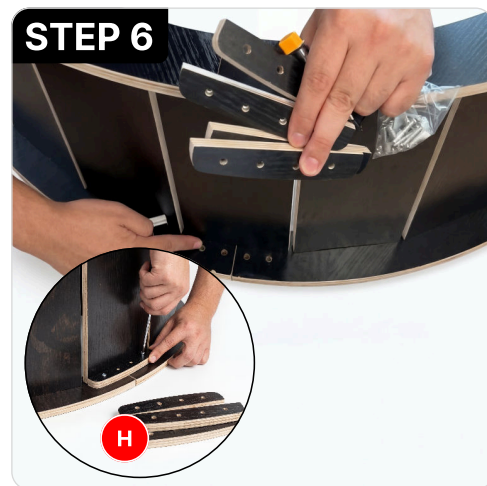
<https://marlenespetshop.com/pages/kitty-wheelz-instructions>



Assemble Part C with A,B and D using the N.



Install G anywhere in this step. Connect the two E to make circle.



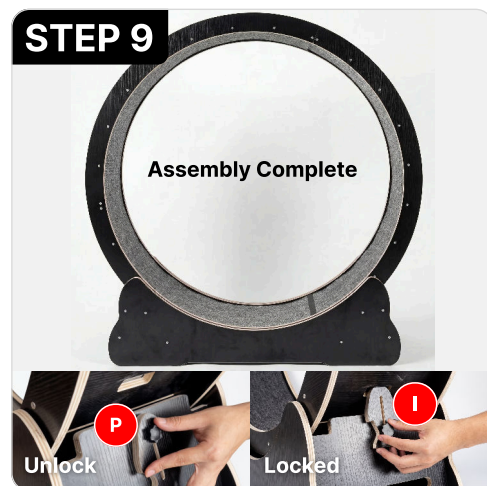
Link the part H to the scroll wheel by using screw



Remove the top sticker from the black strap-backed adhesive female buckle. Fix one circle along the inner test of the roller



Stick the gray cat scratch pad evenly to the inside of the runway



Lock when not in use. The wooden lock is inserted into the card slot to lock.

**And You're Done!**

